

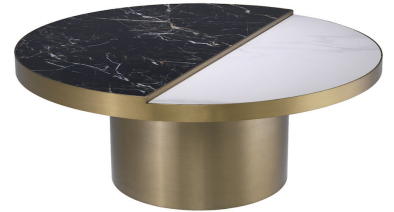


E I C H H O L T Z

EST. 1992

## SPECIFICATION SHEET

Item no.	114120
Item description	Coffee Table Excelsior brushed brass finish Brushed brass finish   ceramic marble look
Suitable for	Indoor use/dry locations only
Net weight (kg)	46.7
Net weight (lbs)	102.93



## DIMENSIONS

Dimensions (cm)	Ø 88   H. 35 cm
Dimensions (inch)	Ø 34.65"   H. 13.78"

## MATERIALS

114120A	Coffee Table Excelsior brushed brass finish-Stand Stainless steel
Stainless steel grade	SAE 304
114120B	Coffee Table Excelsior brushed brass finish - Top Ceramic   Stainless steel
Stainless steel grade	SAE 304

## LOGISTIC INFORMATION

114120A	Coffee Table Excelsior brushed brass finish-Stand   1 pc(s)
Carton length (m)	0.46
Carton width (m)	0.46
Carton height (m)	0.31
Carton cubage (m)	0.0656
Gross weight (kg)	10.6
HS code EU	94032080
Carton length (inch)	18.11
Carton width (inch)	18.11
Carton height (inch)	12.2
Carton cubage (ft)	2.32
Gross weight (lbs)	23.36
HS code USA	9403200050
Country of origin	China
114120B	Coffee Table Excelsior brushed brass finish - Top   1 pc(s)
Carton length (m)	0.96
Carton width (m)	0.96
Carton height (m)	0.14
Carton cubage (m)	0.129
Gross weight (kg)	36
HS code EU	68029100
Carton length (inch)	37.8
Carton width (inch)	37.8
Carton height (inch)	5.51
Carton cubage (ft)	4.56
Gross weight (lbs)	79.34
HS code USA	6802911500



E I C H H O L T Z

EST. 1992

SPECIFICATION SHEET

Country of origin

China